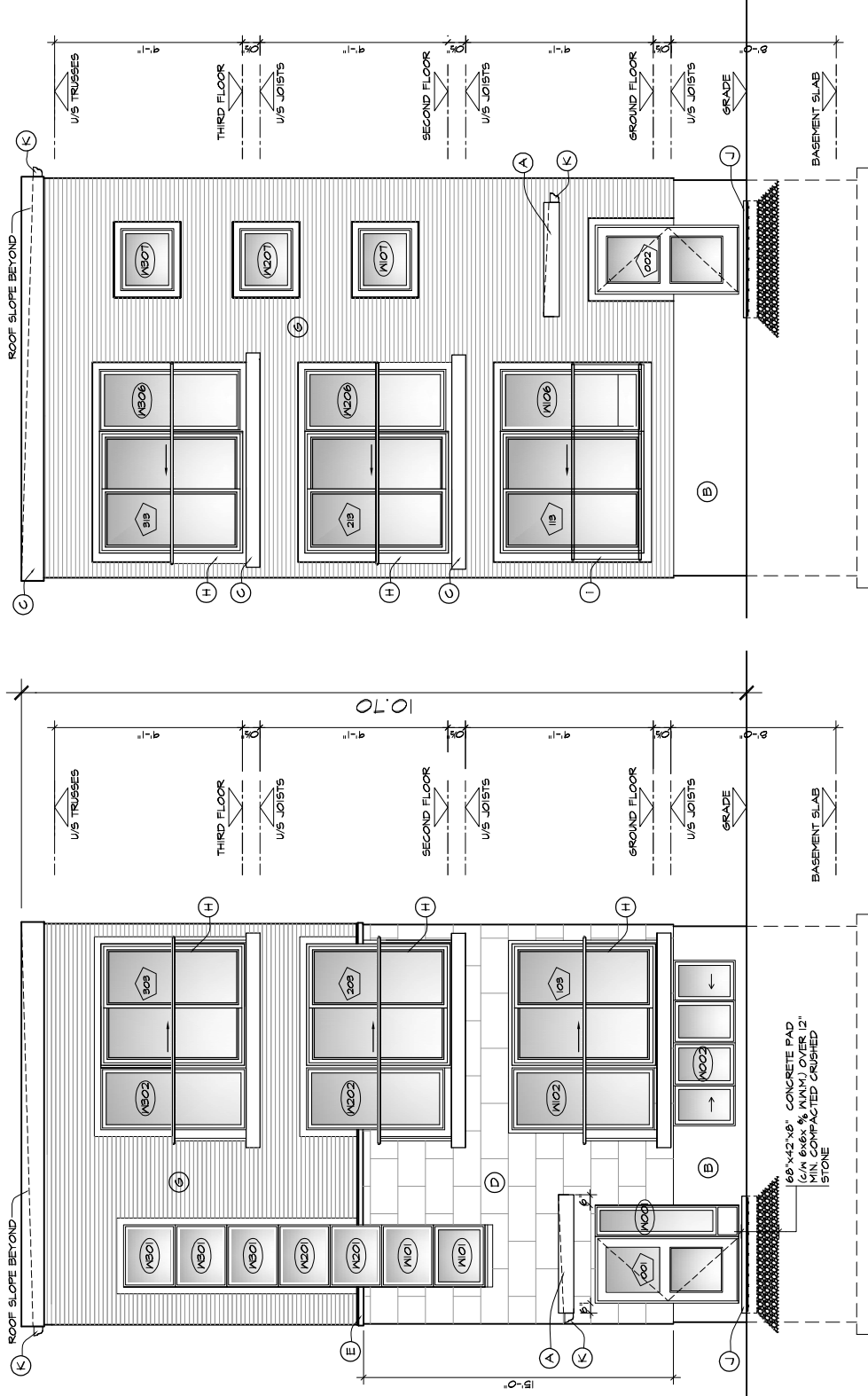
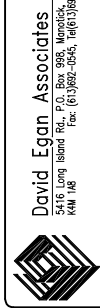


- ELEVATION NOTES.**
- (A) - CANOPY
 - (B) - PARAPET
 - (C) - PREFINISHED METAL FASCIA
 - (D) - RENAISSANCE STONE VENEER
 - (E) - PRE-CAST CONCRETE SILL
 - (F) - VERTICAL METAL SIDING
 - (G) - HORIZONTAL METAL SIDING
 - (H) - GLASS GUARDRAIL
 - (I) - GLASS FRENCH RAIL
 - (J) - CONCRETE LANDING
 - (K) - RAINWATER GUTTER (6" DOWNSPOUT)
 - (L) - MECHANICAL VENTILATION/EXHAUST



1 FRONT ELEVATION (NORTH)
A5 SCALE 3/16"=1'-0"

2 REAR ELEVATION (SOUTH)
A5 SCALE 3/16"=1'-0"



David Egan Associates Inc.
 5415 Long Island Rd., P.O. Box 888, Markham, Ontario
 K4M 1A8 Tel: (613) 982-0545, Fax: (613) 982-8844

PROJECT
APARTMENT BUILDING
732 COOPER STREET
OTTAWA, ONTARIO

DRAWING
FRONT AND REAR
ELEVATIONS

DATE OCT. 21/11
SCALE 3/16"=1'-0"

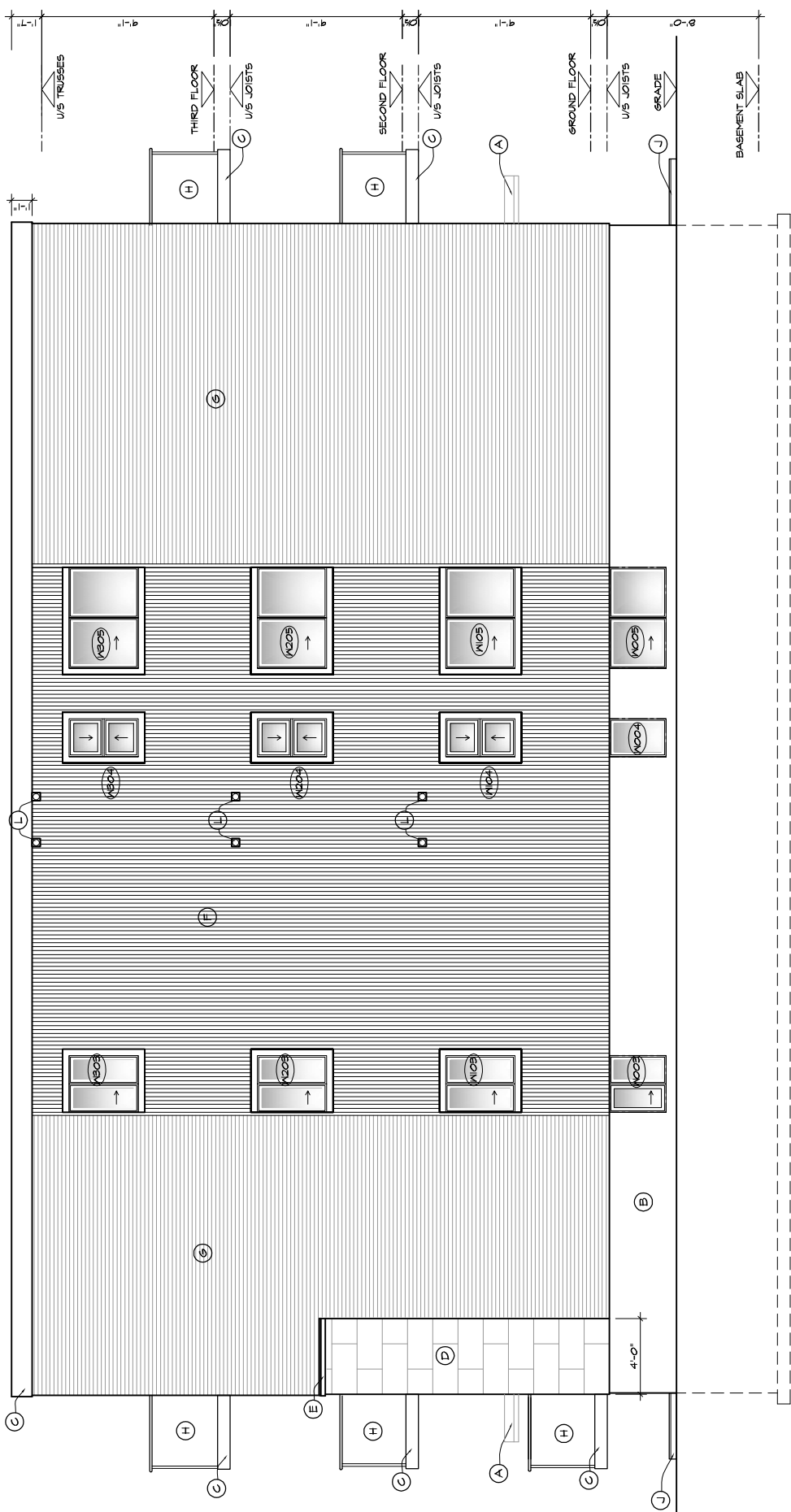
DRAWN BY S.P.
CHECKED BY D.E.

PROJECT NO.
115

DRAWING NO.
A-5

FIRM BCIN #
 31326

INDIVIDUAL BCIN #
 23729



1 RIGHT SIDE ELEVATION (WEST)
A6 SCALE 3/16"=1'-0"

FIRM BCIN # 31326
INDIVIDUAL BCIN # 23729

PROJECT
APARTMENT BUILDING
732 COOPER STREET
OTTAWA, ONTARIO

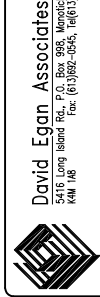
DRAWING
RIGHT SIDE ELEVATION

DATE **OCT. 21/11**
SCALE **3/16"=1'-0"**

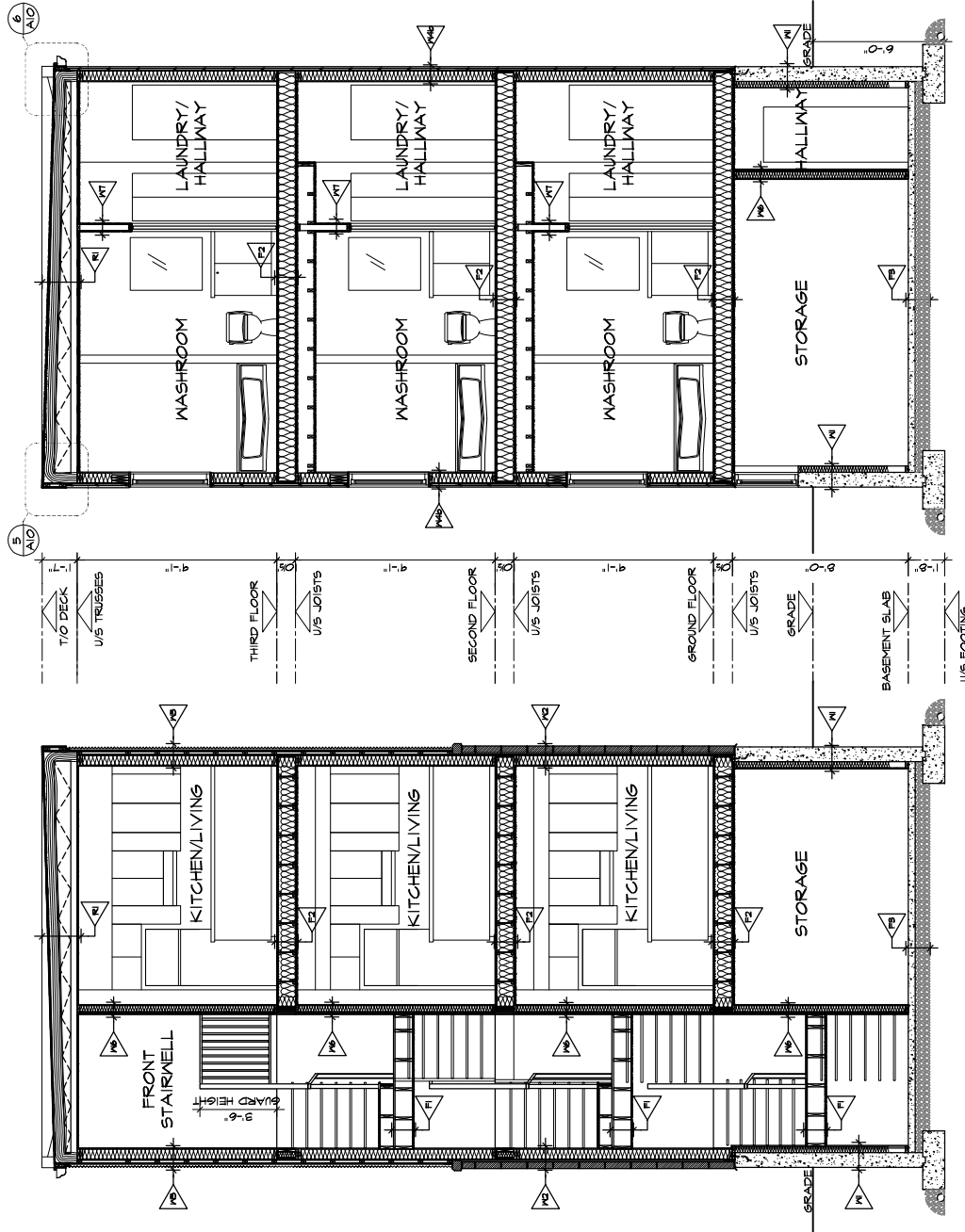
DRAWN BY **S.P.**
CHECKED BY **D.E.**

PROJECT NO.
1115

DRAWING NO.
A-6



David Egan Associates Inc.
5418 Long Island Rd., P.O. Box 888, Markham, Ontario
K4M 1A8
Tel: (613) 982-0545, Fax: (613) 982-6644



1 BUILDING SECTION
AS SCALE 3/16"=1'-0"

2 BUILDING SECTION
AS SCALE 3/16"=1'-0"

1	12/15/11	GENERAL REVISIONS
#	MM/DD/YY	REV.
FIRM BCIN # 31326		
INDIVIDUAL BCIN # 23729		

PROJECT NO. 1115
DRAWING NO. A-8
REL. 1

DATE OCT. 2/11
SCALE 3/16"=1'-0"
DRAWN BY S.P.
CHECKED BY D.E.

DRAWING BUILDING SECTIONS
ELEVATION

PROJECT APARTMENT BUILDING
732 COOPER STREET
OTTAWA, ONTARIO

David Egan Associates Inc.
5415 Long Island Rd., P.O. Box 988, Markham, Ontario
K4M 1A8
Tel: (613) 992-0545, (416) 375-6644

